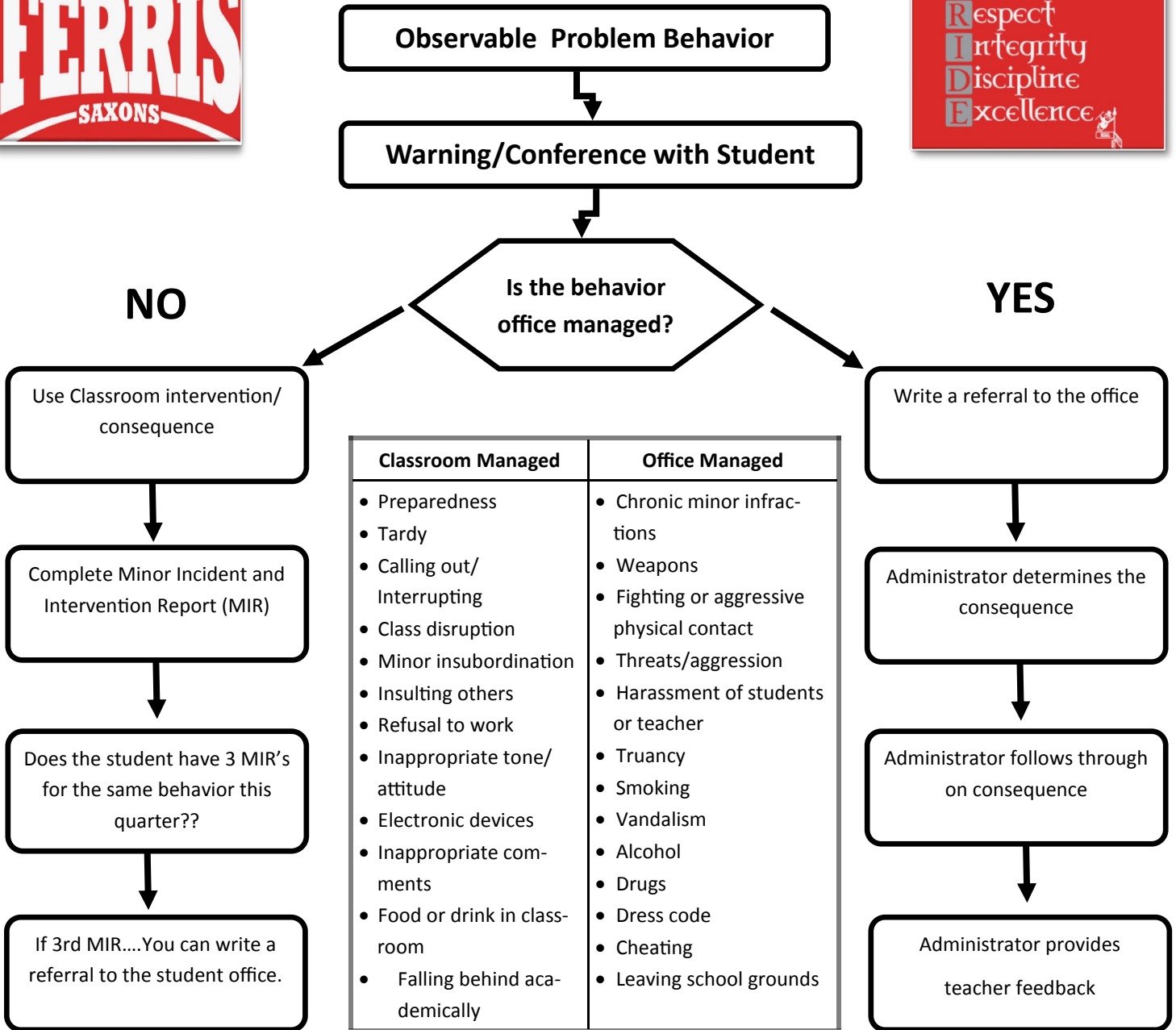
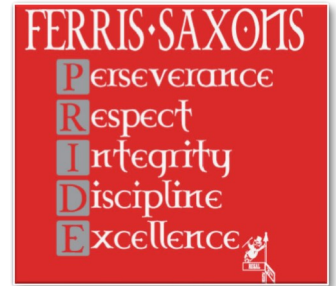


# Ferris High School : Positive Behavior Interventions and Supports



## Classroom Behavior Flow chart



- Possible Classroom Interventions:**
- Teacher proximity
  - Positive reinforcement
  - Teacher student conference
  - Differentiation/academic support
  - Call parents
  - Change of seat
  - After school detention in class
  - Homework center referral

- Minor Incident Reports:**
- Issue MIR when student does not respond to pre correction, redirection, or verbal warning.
  - Once written submit a copy with administrator:
  - After 3 MIR's the behavior is considered chronic and can be referred to administration.